

Royal Oak Dr between Pat Bay Hwy and Elk Lake Dr

October 22, 2019 To October 23, 2019



The data presented here is for information purposes only and should not be considered authoritative for construction, geotechnical, engineering, navigational, legal, or other site-specific uses. The information shared is owned by the Transportation Division of the Engineering Department at the District of Saanich. Accuracy is not guaranteed.

Start Date: 21-Oct-19
 Start Time: 0:00
 Station ID: M0030-07

Location 1: Royal Oak Dr between Pat Bay Hwy and Elk Lake Dr

Note: Eastbound data bad after Oct 22 @ 17:30. No westbound data.

DATE:	October 21, 2019		October 22, 2019		October 23, 2019		October 24, 2019		October 25, 2019		WK AVG		WK AVG	HOURLY
	MON		TUE		WED		THURS		FRI				CH 1+2	%
Time:	EB	WB	EB	WB	EB	WB	EB	WB	EB	WB	EB	WB		
12-1 AM	28		33								31	#DIV/0!	#DIV/0!	#DIV/0!
1-2 AM	14		16								15	#DIV/0!	#DIV/0!	#DIV/0!
2-3 AM	15		18								17	#DIV/0!	#DIV/0!	#DIV/0!
3-4 AM	23		29								26	#DIV/0!	#DIV/0!	#DIV/0!
4-5 AM	59		47								53	#DIV/0!	#DIV/0!	#DIV/0!
5-6 AM	185		200								193	#DIV/0!	#DIV/0!	#DIV/0!
6-7 AM	488		491								490	#DIV/0!	#DIV/0!	#DIV/0!
7-8 AM	849		861								855	#DIV/0!	#DIV/0!	#DIV/0!
8-9 AM	996		1070								1033	#DIV/0!	#DIV/0!	#DIV/0!
9-10 AM	870		919								895	#DIV/0!	#DIV/0!	#DIV/0!
10-11 AM	899		912								906	#DIV/0!	#DIV/0!	#DIV/0!
11-12 PM	1105		899								1002	#DIV/0!	#DIV/0!	#DIV/0!
12-1 PM	929		928								929	#DIV/0!	#DIV/0!	#DIV/0!
1-2 PM	868		922								895	#DIV/0!	#DIV/0!	#DIV/0!
2-3 PM	907		1000								954	#DIV/0!	#DIV/0!	#DIV/0!
3-4 PM	1070		1083								1077	#DIV/0!	#DIV/0!	#DIV/0!
4-5 PM	1065		1100								1083	#DIV/0!	#DIV/0!	#DIV/0!
5-6 PM	998		546								772	#DIV/0!	#DIV/0!	#DIV/0!
6-7 PM	768										768	#DIV/0!	#DIV/0!	#DIV/0!
7-8 PM	515										515	#DIV/0!	#DIV/0!	#DIV/0!
8-9 PM	467										467	#DIV/0!	#DIV/0!	#DIV/0!
9-10 PM	318										318	#DIV/0!	#DIV/0!	#DIV/0!
10-11 PM	158										158	#DIV/0!	#DIV/0!	#DIV/0!
11-12 AM	71										71	#DIV/0!	#DIV/0!	#DIV/0!
LANES	13665										13518	#DIV/0!	#DIV/0!	#DIV/0!
TOTAL											#DIV/0!			
	MON		TUE		WED		THURS		FRI		WK AVG			

PEAK HOUR					TOTAL VEHICALS-PEAK PERIODS		2 HOUR PEAK INTERVALS			
MAX. 7 - 9 am PEAK HOUR	#DIV/0! ⇌	#DIV/0!	between	#DIV/0!	#DIV/0! ⇌	6 HR TOTAL	2 HR AM (7 - 9 AM)			
MAX. 7 - 11 am PEAK HOUR	#DIV/0! ⇌	#DIV/0!	between	#DIV/0!	#DIV/0! ⇌	4 HR TOTAL	VEH / HR	VEH / 2HR	2 HR %	
							7-8 AM	#DIV/0!	#DIV/0!	#DIV/0!
							8-9 AM	#DIV/0!		
MAX. 11 am - 1 pm PEAK HOUR	#DIV/0! ⇌	#DIV/0!	between	#DIV/0!	24 HOUR FACTORS		2 HR NOON (11 - 1 PM)			
MAX. 11 am - 3 pm PEAK HOUR	#DIV/0! ⇌	#DIV/0!	between	#DIV/0!			VEH / HR	VEH / 2HR	2 HR %	
							11-12 PM	#DIV/0!	#DIV/0!	#DIV/0!
MAX. 4 - 6 pm PEAK HOUR	#DIV/0! ⇌	#DIV/0!	between	#DIV/0!	#DIV/0! ⇌	6-24 HR FACT.	12-1 PM	#DIV/0!		
MAX. 3 - 6 pm PEAK HOUR	#DIV/0! ⇌	#DIV/0!	between	#DIV/0!	#DIV/0! ⇌	4-24 HR FACT.	2 HR PM (4 - 6 PM)			
							VEH / HR	VEH / 2HR	2 HR %	
							4-5 PM	#DIV/0!	#DIV/0!	#DIV/0!
							5-6 PM	#DIV/0!		

Royal Oak Dr between Pat Bay Hwy and Elk Lake Dr

Westbound

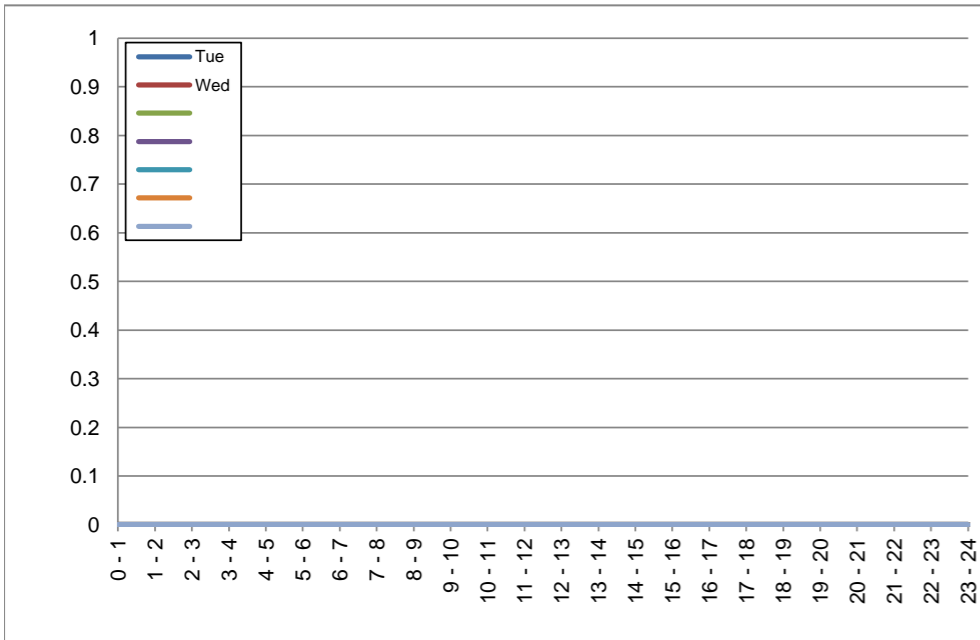
October 22, 2019 to October 23, 2019

Hourly Volumes

Time Period	Tue	Wed				
	Oct 22	Oct 23				
0 - 1	0	0				
1 - 2	0	0				
2 - 3	0	0				
3 - 4	0	0				
4 - 5	0	0				
5 - 6	0	0				
6 - 7	0	0				
7 - 8	0	0				
8 - 9	0	0				
9 - 10	0	0				
10 - 11	0	0				
11 - 12	0	0				
12 - 13	0	0				
13 - 14	0	0				
14 - 15	0	0				
15 - 16	0	0				
16 - 17	0	0				
17 - 18	0	0				
18 - 19	0	0				
19 - 20	0	0				
20 - 21	0	0				
21 - 22	0	0				
22 - 23	0	0				
23 - 24	0	0				
Day Total	0	0				

15-Minute Volumes

Time Start	Tue	Wed					Time Start	Tue	Wed				
	Oct 22	Oct 23						Oct 22	Oct 23				
0:00	0	0					12:00	0	0				
0:15	0	0					12:15	0	0				
0:30	0	0					12:30	0	0				
0:45	0	0					12:45	0	0				
1:00	0	0					13:00	0	0				
1:15	0	0					13:15	0	0				
1:30	0	0					13:30	0	0				
1:45	0	0					13:45	0	0				
2:00	0	0					14:00	0	0				
2:15	0	0					14:15	0	0				
2:30	0	0					14:30	0	0				
2:45	0	0					14:45	0	0				
3:00	0	0					15:00	0	0				
3:15	0	0					15:15	0	0				
3:30	0	0					15:30	0	0				
3:45	0	0					15:45	0	0				
4:00	0	0					16:00	0	0				
4:15	0	0					16:15	0	0				
4:30	0	0					16:30	0	0				
4:45	0	0					16:45	0	0				
5:00	0	0					17:00	0	0				
5:15	0	0					17:15	0	0				
5:30	0	0					17:30	0	0				
5:45	0	0					17:45	0	0				
6:00	0	0					18:00	0	0				
6:15	0	0					18:15	0	0				
6:30	0	0					18:30	0	0				
6:45	0	0					18:45	0	0				
7:00	0	0					19:00	0	0				
7:15	0	0					19:15	0	0				
7:30	0	0					19:30	0	0				
7:45	0	0					19:45	0	0				
8:00	0	0					20:00	0	0				
8:15	0	0					20:15	0	0				
8:30	0	0					20:30	0	0				
8:45	0	0					20:45	0	0				
9:00	0	0					21:00	0	0				
9:15	0	0					21:15	0	0				
9:30	0	0					21:30	0	0				
9:45	0	0					21:45	0	0				
10:00	0	0					22:00	0	0				
10:15	0	0					22:15	0	0				
10:30	0	0					22:30	0	0				
10:45	0	0					22:45	0	0				
11:00	0	0					23:00	0	0				
11:15	0	0					23:15	0	0				
11:30	0	0					23:30	0	0				
11:45	0	0					23:45	0	0				



Site notes: Eastbound data bad after Oct 22 @ 17:30. No westbound data.

Royal Oak Dr between Pat Bay Hwy and Elk Lake Dr

Eastbound

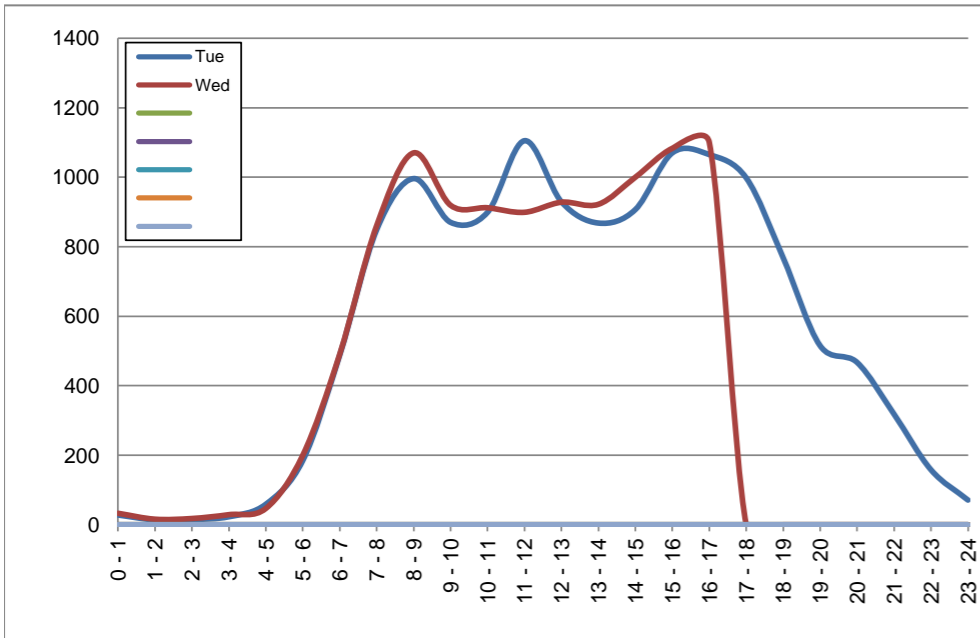
October 22, 2019 to October 23, 2019

Hourly Volumes

Time Period	Tue	Wed				
	Oct 22	Oct 23				
0 - 1	28	33				
1 - 2	14	16				
2 - 3	15	18				
3 - 4	23	29				
4 - 5	59	47				
5 - 6	185	200				
6 - 7	488	491				
7 - 8	849	861				
8 - 9	996	1070				
9 - 10	870	919				
10 - 11	899	912				
11 - 12	1105	899				
12 - 13	929	928				
13 - 14	868	922				
14 - 15	907	1000				
15 - 16	1070	1083				
16 - 17	1065	1100				
17 - 18	998					
18 - 19	768					
19 - 20	515					
20 - 21	467					
21 - 22	318					
22 - 23	158					
23 - 24	71					
Day Total	13665					

15-Minute Volumes

Time Start	Tue	Wed					Time Start	Tue	Wed					
	Oct 22	Oct 23						Oct 22	Oct 23					
0:00	11	13					12:00	271	222					
0:15	5	7					12:15	228	237					
0:30	8	7					12:30	237	235					
0:45	4	6					12:45	193	234					
1:00	2	4					13:00	193	223					
1:15	5	4					13:15	241	234					
1:30	3	4					13:30	206	251					
1:45	4	4					13:45	228	214					
2:00	3	4					14:00	199	225					
2:15	1	6					14:15	234	264					
2:30	3	4					14:30	248	268					
2:45	8	4					14:45	226	243					
3:00	8	8					15:00	246	278					
3:15	8	5					15:15	283	260					
3:30	4	7					15:30	291	278					
3:45	3	9					15:45	250	267					
4:00	8	3					16:00	287	285					
4:15	15	10					16:15	250	290					
4:30	16	20					16:30	265	276					
4:45	20	14					16:45	263	249					
5:00	29	28					17:00	256	275					
5:15	48	26					17:15	242	271					
5:30	47	69					17:30	262						
5:45	61	77					17:45	238						
6:00	78	77					18:00	204						
6:15	110	105					18:15	177						
6:30	155	144					18:30	216						
6:45	145	165					18:45	171						
7:00	167	170					19:00	144						
7:15	190	211					19:15	156						
7:30	247	235					19:30	131						
7:45	245	245					19:45	84						
8:00	242	270					20:00	139						
8:15	203	264					20:15	131						
8:30	273	266					20:30	104						
8:45	278	270					20:45	93						
9:00	206	278					21:00	98						
9:15	239	219					21:15	67						
9:30	207	213					21:30	80						
9:45	218	209					21:45	73						
10:00	221	233					22:00	64						
10:15	238	241					22:15	46						
10:30	219	230					22:30	32						
10:45	221	208					22:45	16						
11:00	202	210					23:00	31						
11:15	233	224					23:15	19						
11:30	309	241					23:30	13						
11:45	361	224					23:45	8						



Site notes: Eastbound data bad after Oct 22 @ 17:30. No westbound data.

Vehicle Speed Summary

Saanich Engineering Department

Count Id: [M0030-07](#)

Filename: [Royal Oak Dr between Pat Bay Hwy and Elk Lake Dr-Oct-2019-Part1.xlsm](#)

Location: Royal Oak Dr between Pat Bay Hwy and Elk Lake Dr

Note: Eastbound data bad after Oct 22 @ 17:30. No westbound data.

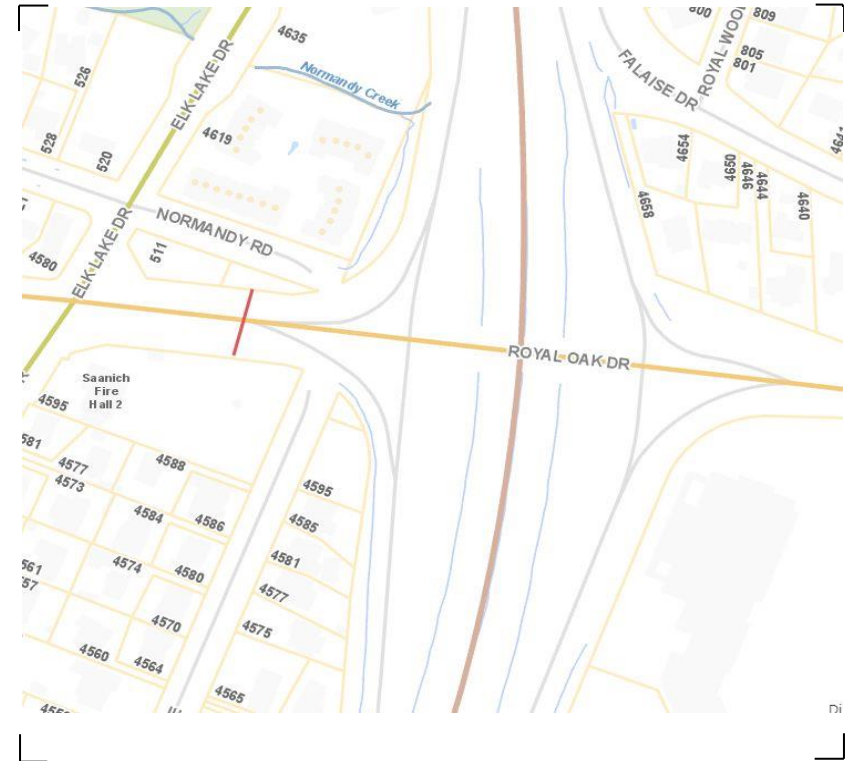
Direction: **East-West**

Dates: **October 22, 2019 To October 23, 2019**

Filtered data

AVG. SPEED	23 mph	37 km/h
50 % SPEED	23 mph	37 km/h
85 % SPEED	30 mph	48 km/h
95 % SPEED	34 mph	55 km/h

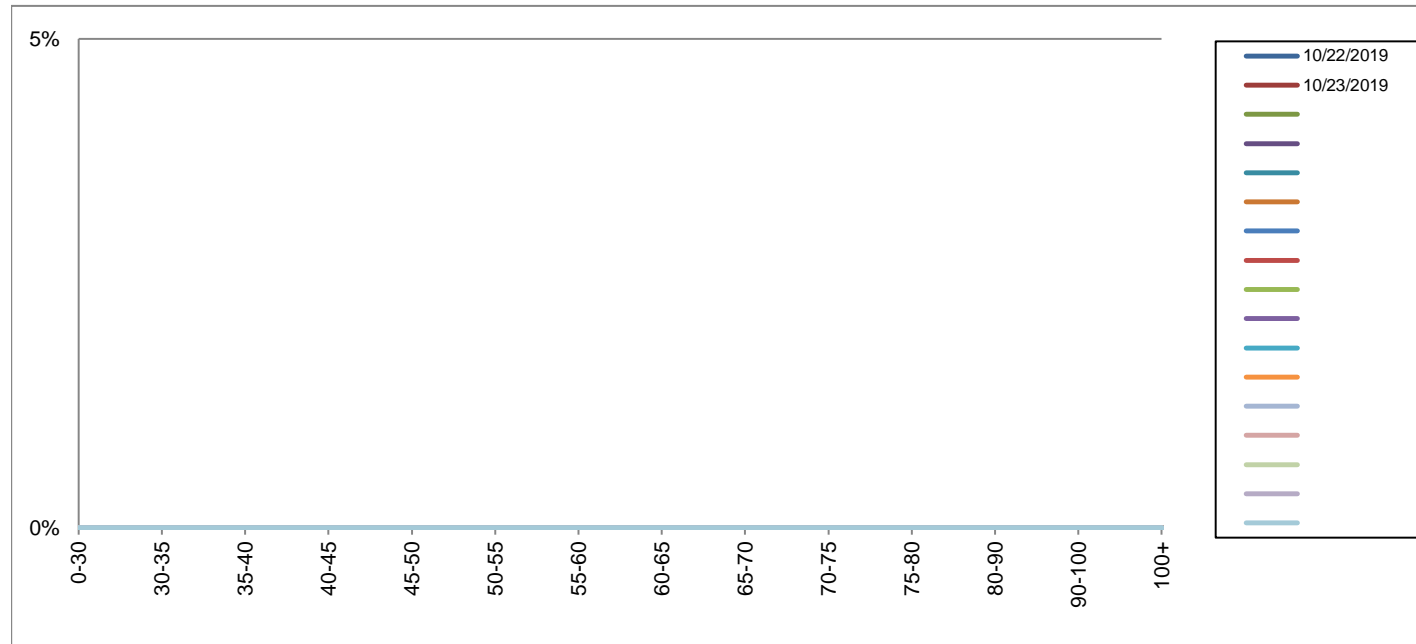
Location Map



Daily Speed Bin Percentages														Daily Speed Bin Volumes														Total	Avg. Speed			
Bin #	1	2	3	4	5	6	7	8	9	10	11	12	13	14	1	2	3	4	5	6	7	8	9	10	11	12	13			14		
Bin Speeds	0-30	30-35	35-40	40-45	45-50	50-55	55-60	60-65	65-70	70-75	75-80	80-90	90-100	100+	0-30	30-35	35-40	40-45	45-50	50-55	55-60	60-65	65-70	70-75	75-80	80-90	90-100	100+	Volume	Speed		
10/22/2019															0	0	0	0	0	0	0	0	0	0	0	0	0	0	0			
10/23/2019															0	0	0	0	0	0	0	0	0	0	0	0	0	0	0	0		
Total															0	0	0	0	0	0	0	0	0	0	0	0	0	0	0	0		

Speed Data Summary

Bin #	1	2	3	4	5	6	7	8	9	10	11	12	13	14	Total
Bin Speeds	0-30	30-35	35-40	40-45	45-50	50-55	55-60	60-65	65-70	70-75	75-80	80-90	90-100	100+	
Survey Total	0	0	0	0	0	0	0	0	0	0	0	0	0	0	0
% Total															
Accumulated %															
Inverse Accum. %															
Average Speed	0 KM/H														



Site notes: Eastbound data bad after Oct 22 @ 17:30. No westbound data.

Royal Oak Dr between Pat Bay Hwy and Elk Lake Dr

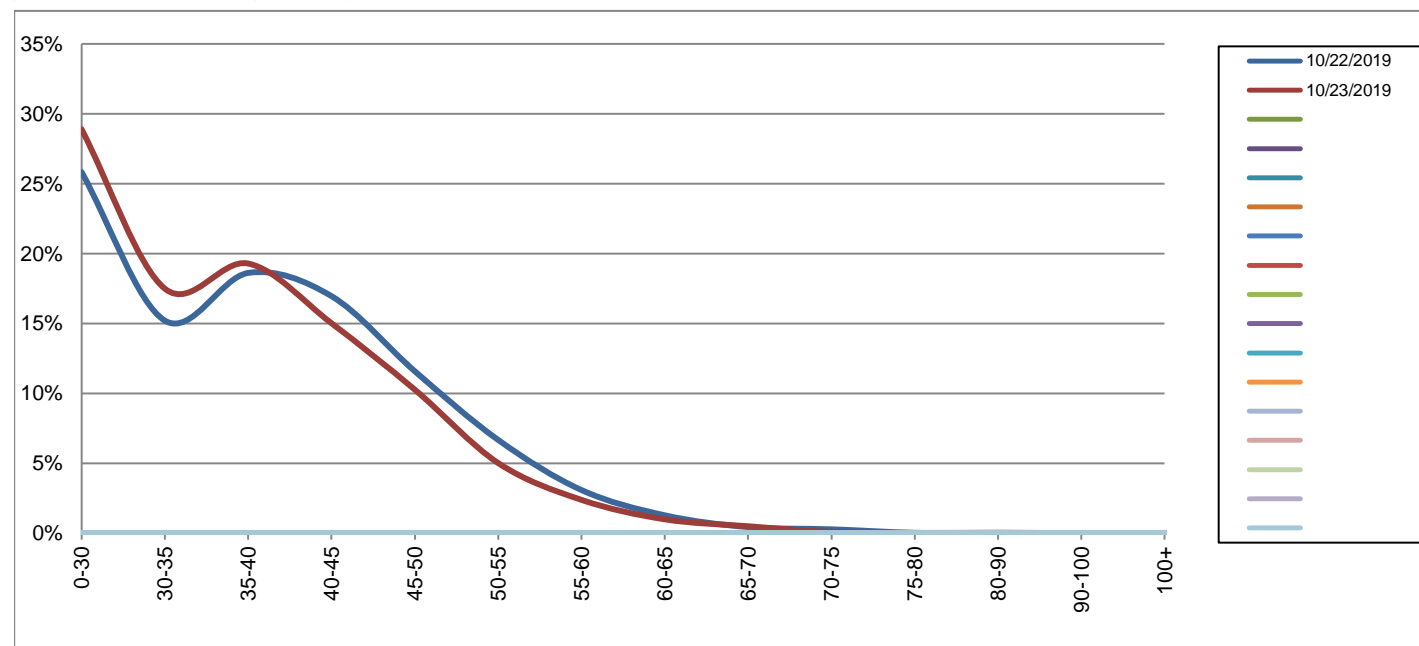
Eastbound

October 22, 2019 to October 23, 2019

Daily Speed Bin Percentages															Daily Speed Bin Volumes														Total	Avg.
Bin #	1	2	3	4	5	6	7	8	9	10	11	12	13	14	1	2	3	4	5	6	7	8	9	10	11	12	13	14	Volume	Speed
Bin Speeds	0-30	30-35	35-40	40-45	45-50	50-55	55-60	60-65	65-70	70-75	75-80	80-90	90-100	100+	0-30	30-35	35-40	40-45	45-50	50-55	55-60	60-65	65-70	70-75	75-80	80-90	90-100	100+		
10/22/2019	25.8%	15.2%	18.6%	17.0%	11.6%	6.7%	3.1%	1.3%	0.4%	0.3%	0.0%	0.0%	0.0%	0.0%	3530	2078	2544	2317	1583	912	422	175	60	38	4	1	1	0	13665	35
10/23/2019	28.9%	17.5%	19.3%	15.0%	10.3%	5.0%	2.4%	1.0%	0.5%	0.1%	0.0%	0.0%	0.0%	0.0%	3200	1937	2136	1663	1137	556	264	110	55	10	2	4	0	0	11074	34
Total	27.2%	16.2%	18.9%	16.1%	11.0%	5.9%	2.8%	1.2%	0.5%	0.2%	0.0%	0.0%	0.0%	0.0%	6730	4015	4680	3980	2720	1468	686	285	115	48	6	5	1	0	24739	34

Speed Data Summary

Bin #	1	2	3	4	5	6	7	8	9	10	11	12	13	14	Total
Bin Speeds	0-30	30-35	35-40	40-45	45-50	50-55	55-60	60-65	65-70	70-75	75-80	80-90	90-100	100+	
Survey Total	6730	4015	4680	3980	2720	1468	686	285	115	48	6	5	1	0	24739
% Total	27.2%	16.2%	18.9%	16.1%	11.0%	5.9%	2.8%	1.2%	0.5%	0.2%	0.0%	0.0%	0.0%	0.0%	100%
Accumulated %	27.2%	43.4%	62.4%	78.4%	89.4%	95.4%	98.1%	99.3%	99.8%	100.0%	100.0%	100.0%	100.0%	100%	
Inverse Accum. %	72.8%	56.6%	37.6%	21.6%	10.6%	4.6%	1.9%	0.7%	0.2%	0.0%	0.0%	0.0%	0.0%	0.0%	
Average Speed	34 KM/H														



Site notes: Eastbound data bad after Oct 22 @ 17:30. No westbound data.

Royal Oak Dr between Pat Bay Hwy and Elk Lake Dr

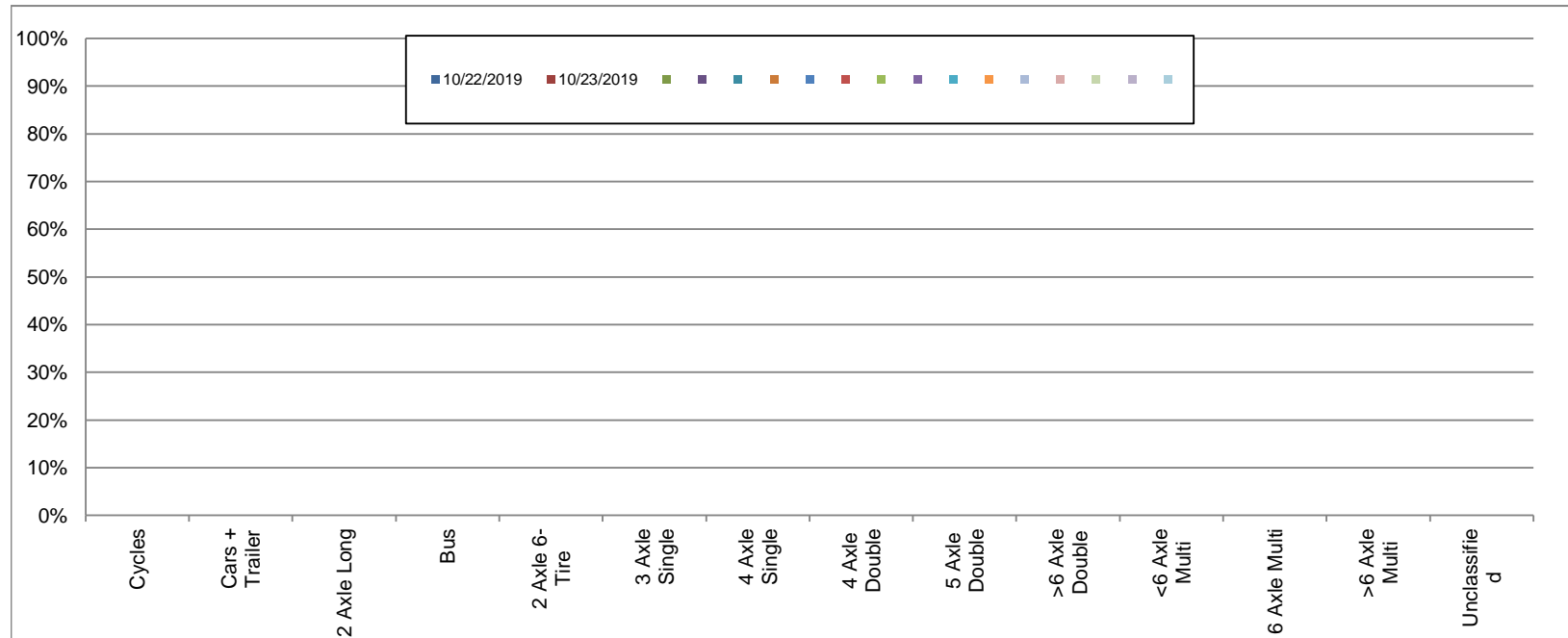
Westbound

October 22, 2019 to October 23, 2019

Daily Class Bin Percentages														Daily Class Bin Volumes																
Bin #	1	2	3	4	5	6	7	8	9	10	11	12	13	14	1	2	3	4	5	6	7	8	9	10	11	12	13	14	Total	
Bin Class	Cycles	Cars + Trailer	2 Axle Long	Bus	2 Axle 6-Tire	3 Axle Single	4 Axle Single	4 Axle Double	5 Axle Double	>6 Axle Double	<6 Axle Multi	6 Axle Multi	>6 Axle Multi	Unclassified	Cycles	Cars + Trailer	2 Axle Long	Bus	2 Axle 6-Tire	3 Axle Single	4 Axle Single	4 Axle Double	5 Axle Double	>6 Axle Double	<6 Axle Multi	6 Axle Multi	>6 Axle Multi	Unclassified	Total Volume	
10/22/2019															0	0	0	0	0	0	0	0	0	0	0	0	0	0	0	
10/23/2019															0	0	0	0	0	0	0	0	0	0	0	0	0	0	0	0
Total															0	0	0	0	0	0	0	0	0	0	0	0	0	0	0	0

Class Data Summary

Bin #	1	2	3	4	5	6	7	8	9	10	11	12	13	14	Total
Bin Class	Cycles	Cars + Trailer	2 Axle Long	Bus	2 Axle 6-Tire	3 Axle Single	4 Axle Single	4 Axle Double	5 Axle Double	>6 Axle Double	<6 Axle Multi	6 Axle Multi	>6 Axle Multi	Unclassified	Total Volume
Survey Total	0	0	0	0	0	0	0	0	0	0	0	0	0	0	0
% Total															
Accumulated %															
Inv. Accum. %															



Classification Descriptions

Bin #	Bin Description
1	Motorcycles
2	Passenger cars, including those with recreational trailers
3	2-axle pick-ups, vans, and RVs, including those with recreational trailers
4	Buses
5	2-axle, 6-tire single units
6	3-axle single units
7	4-axle single units
8	3-axle or 4-axle double unit
9	5-axle double unit
10	6-, 7-, or 8-axle double unit
11	5-axle multiple unit
12	6-axle multiple unit
13	7-or-more-axle multiple unit
14	Vehicles that could not be classified

Site notes: Eastbound data bad after Oct 22 @ 17:30. No westbound data.

Royal Oak Dr between Pat Bay Hwy and Elk Lake Dr

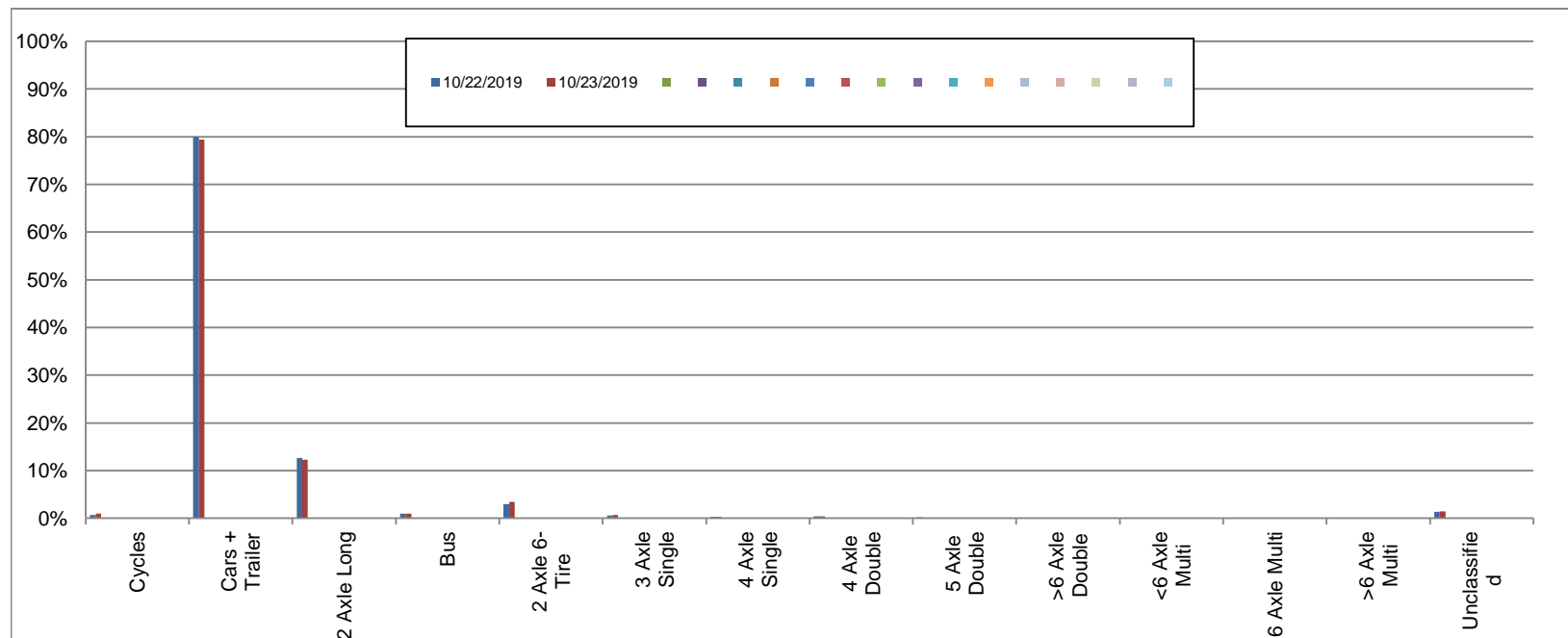
Eastbound

October 22, 2019 to October 23, 2019

Daily Class Bin Percentages															Daily Class Bin Volumes														
Bin #	1	2	3	4	5	6	7	8	9	10	11	12	13	14	1	2	3	4	5	6	7	8	9	10	11	12	13	14	Total
Bin Class	Cycles	Cars + Trailer	2 Axle Long	Bus	2 Axle 6-Tire	3 Axle Single	4 Axle Single	4 Axle Double	5 Axle Double	>6 Axle Double	<6 Axle Multi	6 Axle Multi	>6 Axle Multi	Unclassified	Cycles	Cars + Trailer	2 Axle Long	Bus	2 Axle 6-Tire	3 Axle Single	4 Axle Single	4 Axle Double	5 Axle Double	>6 Axle Double	<6 Axle Multi	6 Axle Multi	>6 Axle Multi	Unclassified	Total Volume
10/22/2019	0.7%	80.0%	12.6%	1.0%	3.0%	0.6%	0.3%	0.4%	0.2%	0.0%	0.0%	0.0%	0.0%	1.3%	92	10926	1723	131	407	76	40	54	28	3	1	1	5	178	13665
10/23/2019	0.9%	79.4%	12.2%	0.9%	3.4%	0.6%	0.3%	0.4%	0.1%	0.1%	0.0%	0.0%	0.1%	1.4%	102	8793	1355	104	380	71	32	49	14	10	1	0	7	156	11074
Total	0.8%	79.7%	12.4%	0.9%	3.2%	0.6%	0.3%	0.4%	0.2%	0.1%	0.0%	0.0%	0.0%	1.4%	194	19719	3078	235	787	147	72	103	42	13	2	1	12	334	24739

Class Data Summary

Bin #	1	2	3	4	5	6	7	8	9	10	11	12	13	14	Total
Bin Class	Cycles	Cars + Trailer	2 Axle Long	Bus	2 Axle 6-Tire	3 Axle Single	4 Axle Single	4 Axle Double	5 Axle Double	>6 Axle Double	<6 Axle Multi	6 Axle Multi	>6 Axle Multi	Unclassified	Total Volume
Survey Total	194	19719	3078	235	787	147	72	103	42	13	2	1	12	334	24739
% Total	0.8%	79.7%	12.4%	0.9%	3.2%	0.6%	0.3%	0.4%	0.2%	0.1%	0.0%	0.0%	0.0%	1.4%	100%
Accumulated %	0.8%	80.5%	92.9%	93.9%	97.1%	97.7%	98.0%	98.4%	98.5%	98.6%	98.6%	98.6%	98.6%	100.0%	
Inv. Accum. %	99.2%	19.5%	7.1%	6.1%	2.9%	2.3%	2.0%	1.6%	1.5%	1.4%	1.4%	1.4%	1.4%	0.0%	



Classification Descriptions

Bin #	Bin Description
1	Motorcycles
2	Passenger cars, including those with recreational trailers
3	2-axle pick-ups, vans, and RVs, including those with recreational trailers
4	Buses
5	2-axle, 6-tire single units
6	3-axle single units
7	4-axle single units
8	3-axle or 4-axle double unit
9	5-axle double unit
10	6-, 7-, or 8-axle double unit
11	5-axle multiple unit
12	6-axle multiple unit
13	7-or-more-axle multiple unit
14	Vehicles that could not be classified

Site notes: Eastbound data bad after Oct 22 @ 17:30. No westbound data.